

Rittal – The System.

Faster – better – everywhere.

Module plates For 16/24-pole connectors – TS 8609.150

Date : Nov 28, 2019

ENCLOSURES

POWER DISTRIBUTION

CLIMATE CONTROL

IT INFRASTRUCTURE

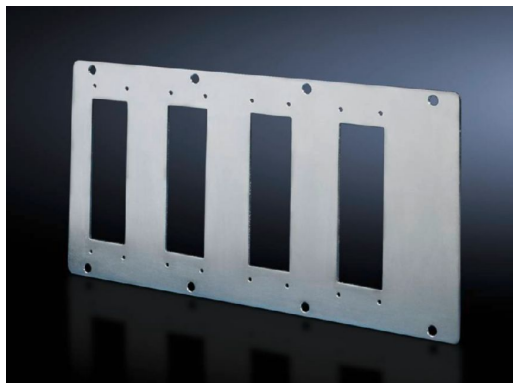
SOFTWARE & SERVICES

FRIEDHELM LOH GROUP



Module plates For 16/24-pole connectors – TS 8609.150

created: 28.11.2019 build on www.rittal.com/uk-en



Product description

Design:	for 16-pole connectors
Description:	With cut-outs to accommodate connectors. In addition to mounting on divider panels, module plates may also be attached to the 25 mm pitch pattern of the enclosure and to the rails of the TS/PS system
Material:	Sheet steel, 2 mm
Surface finish:	Zinc-plated
Supply includes:	Seal and assembly parts

Product features

Cable entry:	Number of cut-outs: 4 Number x metric diameter: 4
Packs of:	1 pc(s).
Weight/pack:	0.78 kg
Copper weight (kg per piece):	0
EAN:	4028177211773
Customs tariff number:	73269098
ETIM 7.0:	EC000211

ETIM 6.0:	EC000211
eCl@ss 8.0/8.1:	27142421
eCl@ss 6.0/6.1:	27182102
Product description:	TS Module panel, for 16-pole connectors
Approvals	
Certificates:	EAC